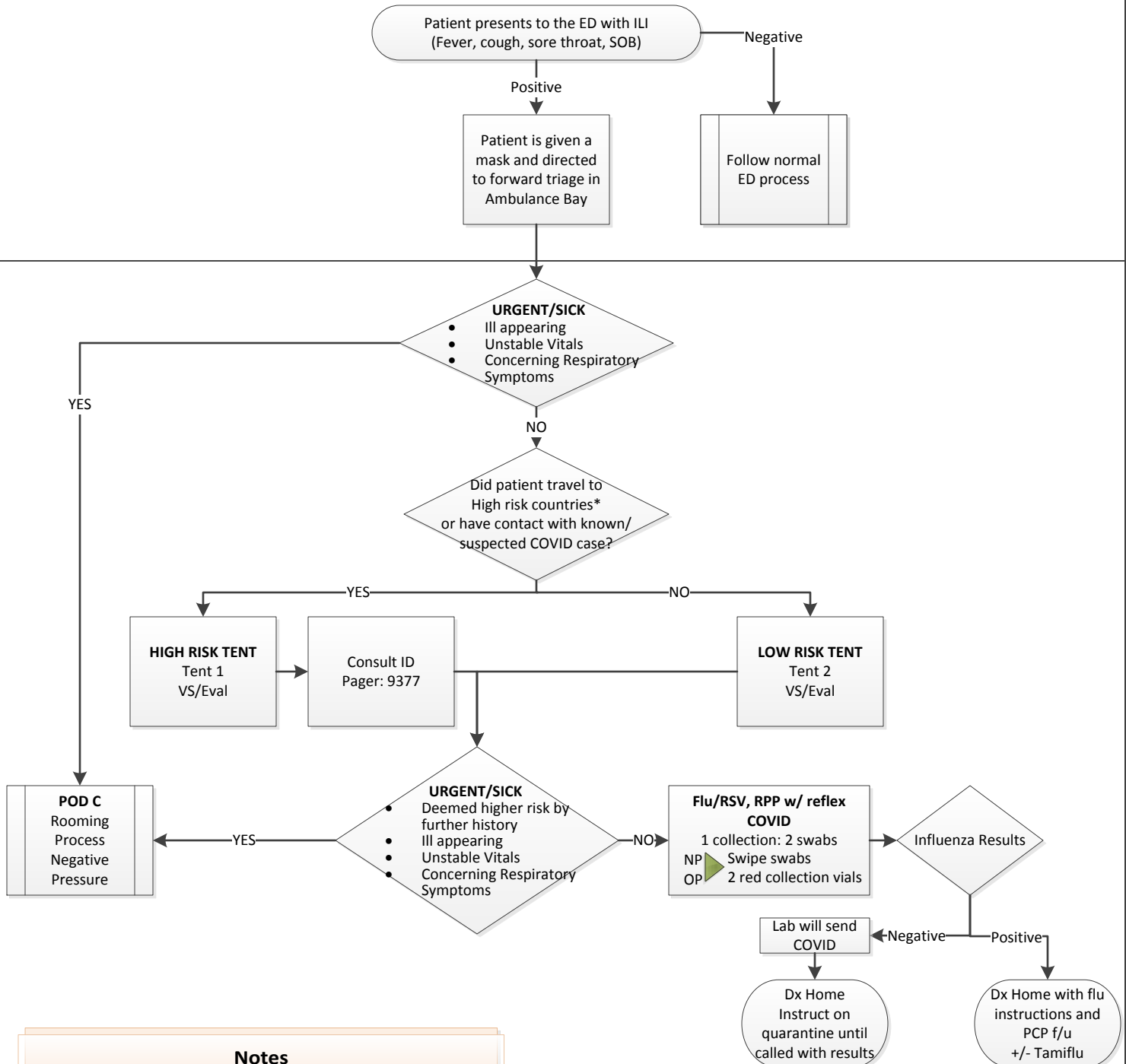


ED Triage and Testing Protocol

Updated 3/12/20 10:20am

GREET DESK

AMBULANCE BAY



Notes

- ID Consult Pager: **9377**
- All providers must maintain **MODIFIED AIRBORNE/DROPLET CONTACT PRECAUTIONS** GOWN, GLOVES, N95 OR CAPR, EYE PROTECTION (MAINTAIN THROUGH Dx)
- *Currently, high risk countries are: **South Korea, China, Italy, Iran**

.EDCOVIDRISKDC

Discharge smartphrase for those at risk or being investigated.

COVIDCONTACTS

Smartphrase that includes important Dx phone #s for CDPH, IDPH

.EDCOVIDNORISK

Discharge smartphrase for patients ruled out for risk factors for Coronavirus.